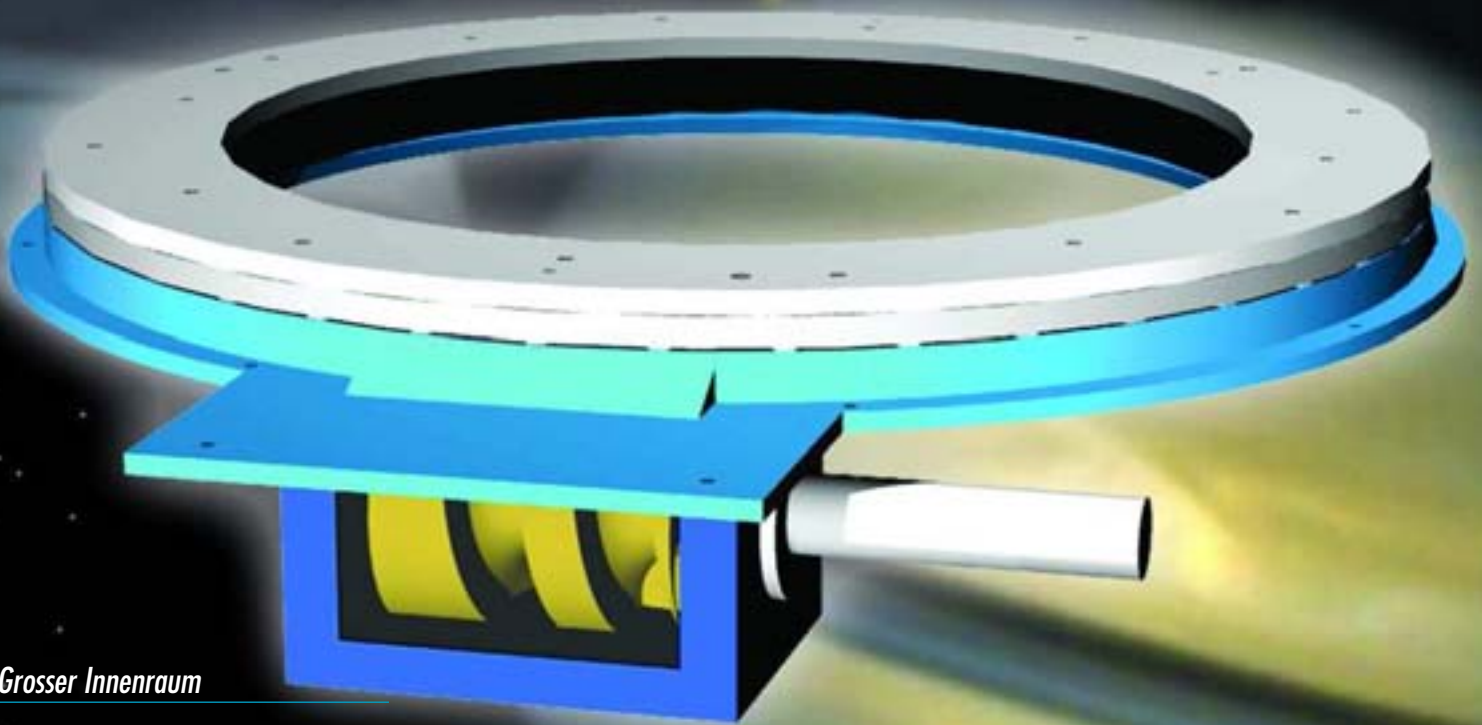




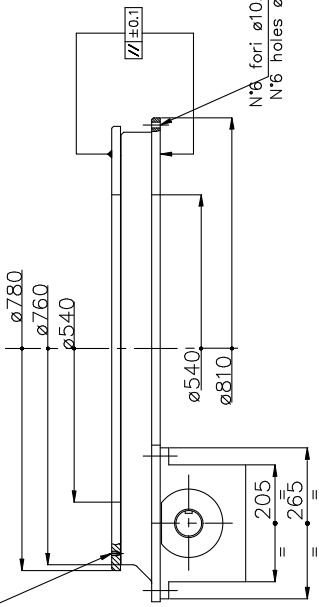
ITALPLANT_{srl}

Ringrundscharttische Serie TI



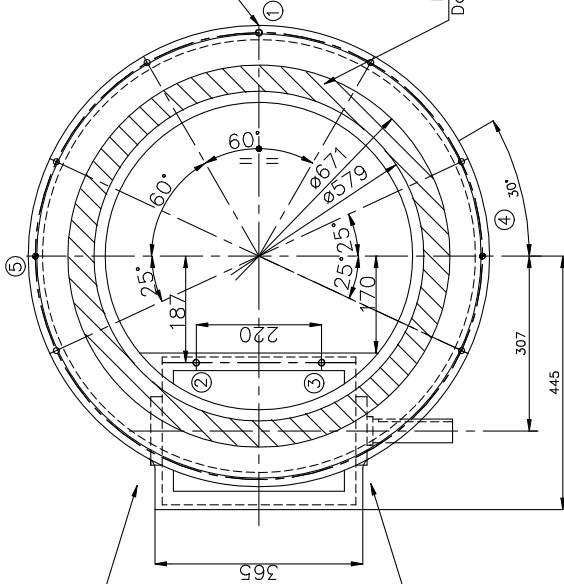
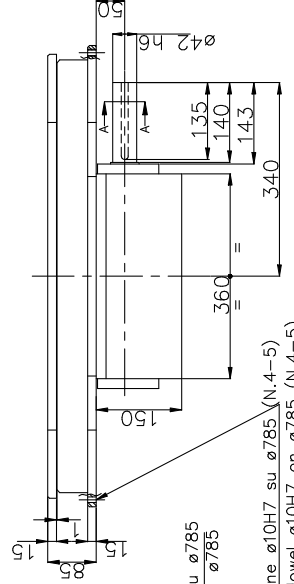
- Grosser Innenraum
- Toroidal Ring aus Hartaluminium
- Flache Konstruktion
- Niedriges Trägheitsmoment Innen
- 4 Grössen: 800-1200-1600-2400

Fori M8x12 per attrezzature
di diametro a richiesta del cliente
Holes M8x12 for fixtures on
diameter by customer's choice

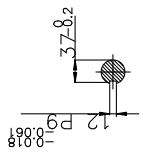


N°6 fori $\phi 10.5$ per fissaggio su $\phi 785$
N°6 holes $\phi 10.5$ for fixing on $\phi 785$

N°2 fori spine $\phi 10H7$ su $\phi 785$ (N.4-5)
N°2 holes for dowel $\phi 10H7$ on $\phi 785$ (N.4-5)

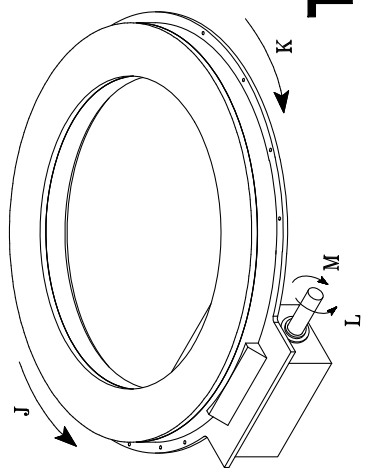


PROIEZIONE 3
PROIEZIONE 1
PROIEZIONE 2



Sez. A-A
Albero di ingresso
Input shaft

N°3 fori M12 per il sollevamento (N.1-2-3)
N°3 holes M12 for lifting (N.1-2-3)



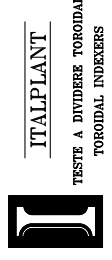
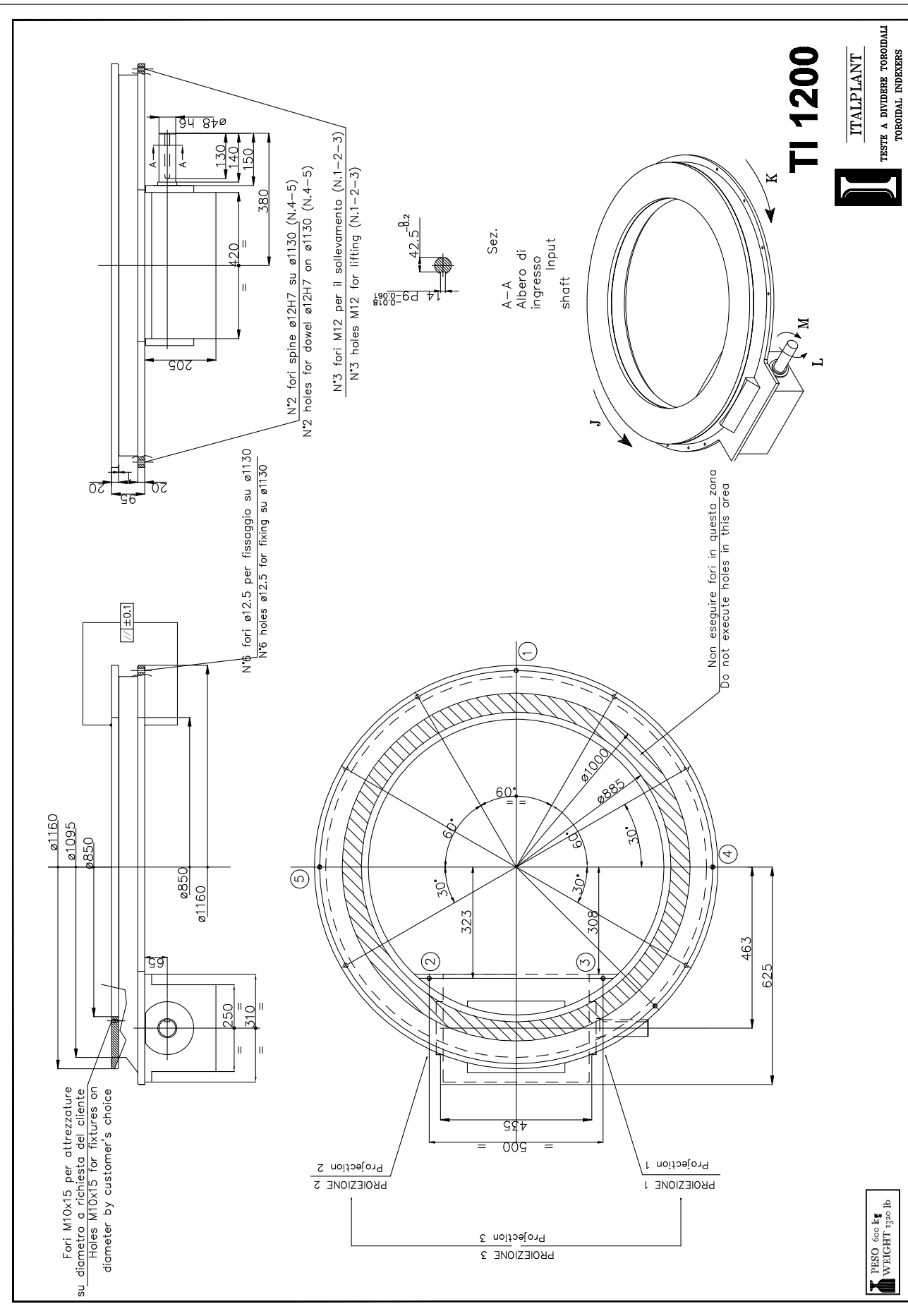
TI 800



ITALPLANT

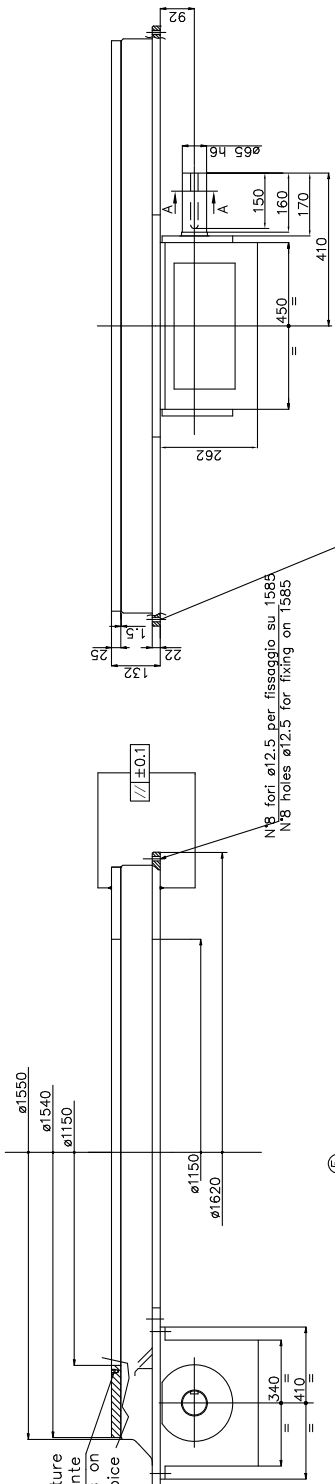
TESTE A DIVIDERE TOROIDALI
TOROIDAL INDEXERS

PESO 450 kg
WEIGHT 99 lb

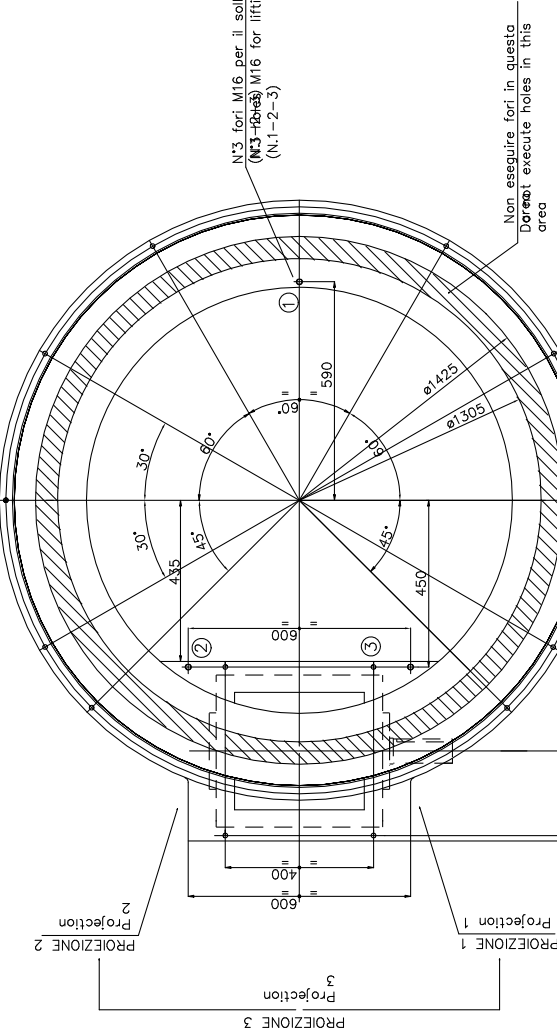


TI 1200

Fori M10X20 per attrezzature
su diametro a richiesta del cliente
Holes M10X20 for fixtures on
diameter by customer's choice

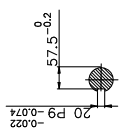


N8 fori $\phi 12.5$ per fissaggio su 1585
N8 holes $\phi 12.5$ for fixing on 1585

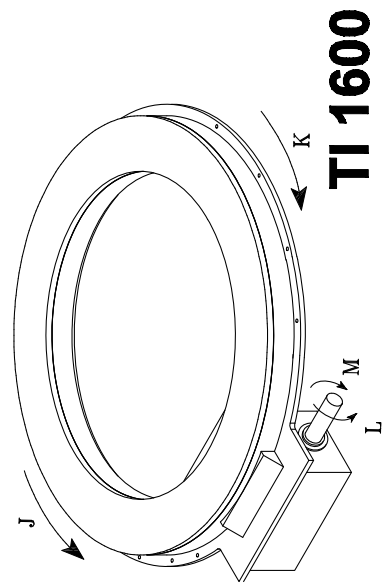


N3 fori M16 per il sollevamento su $\phi 1585$
(N3+2xN3) M16 for lifting on $\phi 1585$
(N.1-2-3)

Non eseguire fori in questo
Dorénot execute holes in this
area



Sez.
A-A
Albero di
ingresso
input
shaft



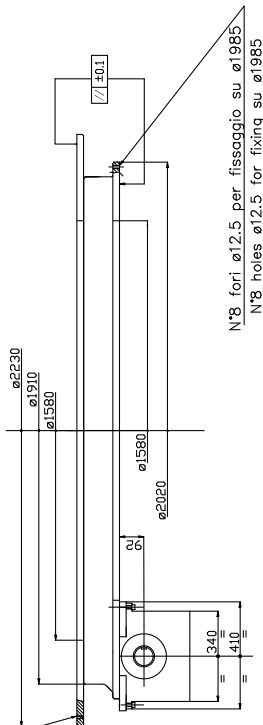
TI 1600



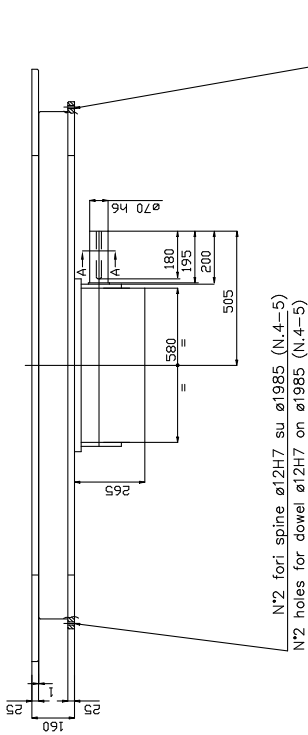
ITALPLANT
TESTE A DIVIDERE TOROIDALI
TOROIDAL INDUCERS

PESO 1000 kg
WEIGHT 2200 lb

Fori M10x20 per attrezzature
su diametro a richiesta del cliente
Holes M10x20 for fixtures on
diameter by customer's choice

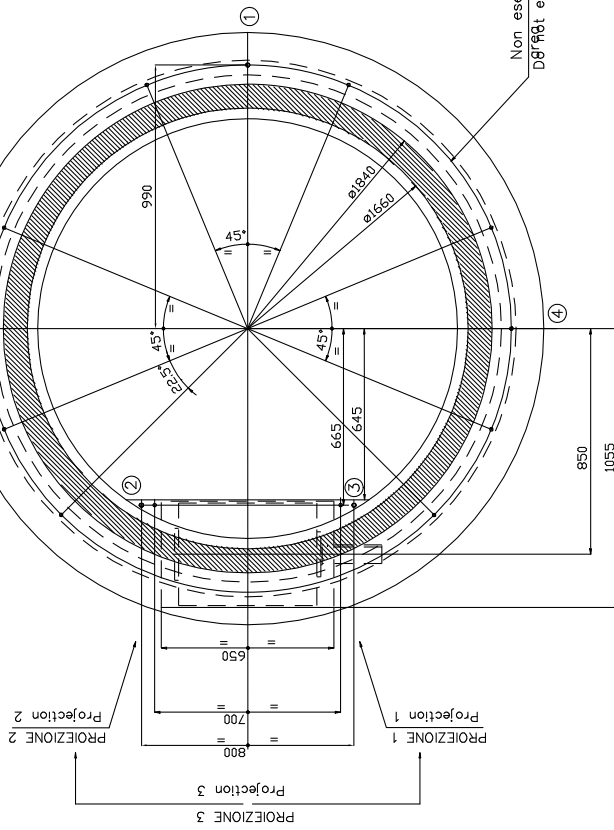


N°8 fori $\phi 12.5$ per fissaggio su $\phi 1985$
N°8 holes $\phi 12.5$ for fixing su $\phi 1985$

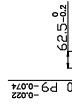


N°2 fori spine $\phi 12H7$ su $\phi 1985$ (N.4-5)
N°2 holes for dowel $\phi 12H7$ on $\phi 1985$ (N.4-5)

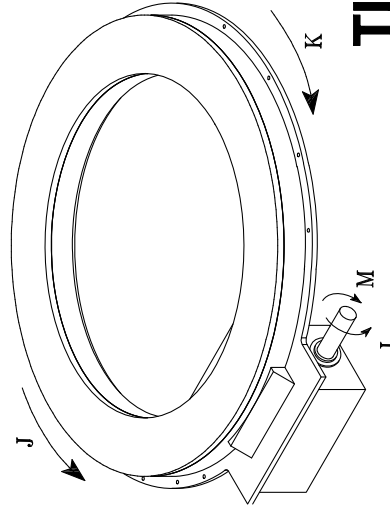
N°3 fori M16 per il sollevamento (N.1-2-3)
N°3 holes M16 for lifting (N.1-2-3)



Non eseguire fori in questa
area
Do not execute holes in this area



Sez. A-A
Albero di ingresso
input shaft



TI 2400



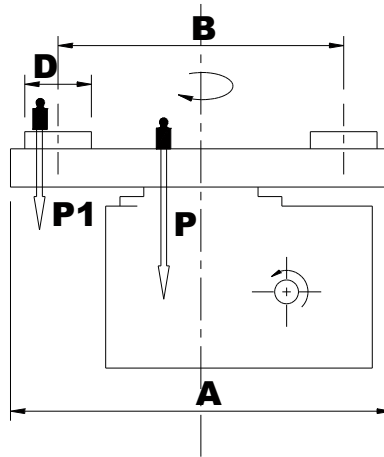
ITALPLANT

TESTE A DIVIDERE TORONALI
TORONAL INDEXERS

PESO 1500 kg
WEIGHT 3300 lb

Spezifikationsangaben Ringschalttisch TI

(notwendige Angaben um die Dimensionierung des Schrittgetriebes zu errechnen)



Bezeichnung	Abkürzung	Einheit	Wert
Durchmesser des Tellers	A	mm	
Abstand Werkstückmitte zur Mitte des gegenüberliegenden Werkstückes	B	mm	
Größe Werkstückes	D	mm	
Gewicht des Tellers (P) oder Angabe von Durchmesser=Ø, Höhe (H) und Material (z.B. Al für Aluminium)	P Ø H Material	kg mm mm	
Gesamtgewicht des Werkstückes + Gewicht der Aufnahme x Anzahl der Stationen	P1	kg	
Anzahl der Schritte	N	Anzahl	
Verfahr- bzw. Schaltzeit	ts	Sek.	
Standzeit	td	Sek.	
Zykluszeit (Schaltzeit + Standzeit)	tc	Sek.	